



B20Pilot II

Multi-functional
sport flashlight



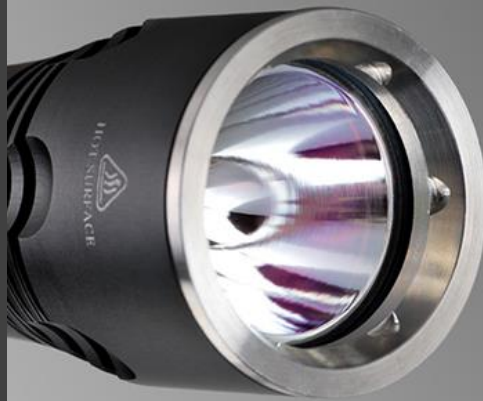
- ✓ CREE XM-L2 U3 LED
- ✓ Maximum Output 1100Lm
- ✓ Max Beam Throw 230m
- ✓ High efficiency constant current driver circuit
- ✓ Max runtime 75h
- ✓ Quick double-click to get hidden Signal mode
- ✓ Tactical tail cap switch for the momentary-on feature
- ✓ Use common 18650/18700 batteries
- ✓ Excellent heat dissipation design

- ✓ No standby current
- ✓ Soft and beautiful beam
- ✓ Aircraft 6N01 aluminum alloy
- ✓ Type III hard-anodized anti-abrasive finish
- ✓ Stainless steel clip
- ✓ Gold-plated spring, antioxidant and avoid poor contact
- ✓ Waterproof IPX8
- ✓ Reverse polarity protection
- ✓ Memory mode function



B20Pilot II

Multi-functional
sport flashlight



Ultra-clear Tempered Glass
Lens with Anti-reflective Coating
98.5% Transmittance
(Common Glass: 89-92% Transmittance)



B20Pilot II

Multi-functional
sport flashlight

XM-L2 U3 LED
Maximum Output **1100Lm**
50000h Lifespan
Orange Peel Reflector





B20Pilot II

Multi-functional
sport flashlight



Low mode **30Lm**
Runtime **75h**



Mid mode/Signal **250Lm**
Runtime **8.5h** (Only Mid mode)



High mode **600Lm**
Runtime **3.5h**



Turbo mode **1100Lm**
Runtime **3.3h**

4 Lighting modes
Low Mid High Turbo
1 Hidden modes
Signal
Max output 1100Lm
Max Intensity 13225cd
Beam Throw 230m
Wide Beam with Superior Distance



B20Pilot II

Multi-functional
sport flashlight

Stainless steel clip



Sturdy and durable

Anodized aircraft 6N01 aluminum alloy
Type III Hard-anodized anti-abrasive finish



B20Pilot II

Multi-functional
sport flashlight



Waterproof IPX8
(Underwater 2m)



B20Pilot II

Multi-functional
sport flashlight



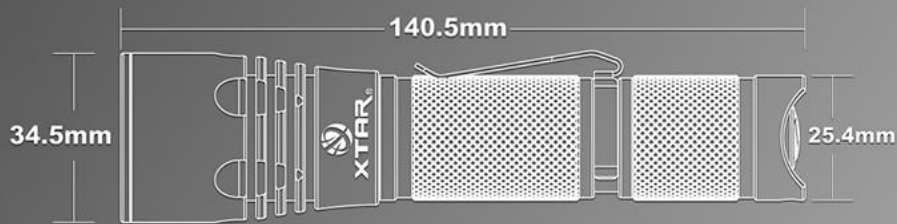
Versatile

Max beam throw 230m
Orange Peel Reflector, wide beam, beautiful floodlight,
suitable for various usage



B20Pilot II

Multi-functional
sport flashlight



Net Weight **120.0g** (Battery excluded)



B20Pilot II

Multi-functional
sport flashlight

Specifications and Features

ANSI	Lighting Mode				
	Turbo	High	Mid	Low	Signal
Luminance	11 00Lm	600Lm	250Lm	30Lm	250Lm
Runtime	3.3h	3.5h	8.5h	75h	/
Beam Throw	230m				
Max Intensity	13225cd				
Impact Resistant	1.5m				
Waterproof	IPX8				
LED	CREE XM-L2 U3				
Material	Anodized aircraft 6N01 aluminum alloy, Premium Type III hard-anodized anti-abrasive finish				
Working Voltage	2.75-4.2V				
Battery	1*18650/18700 lithium battery				
Switch	Tactical tail cap switch				
Size	Ø34.5mm(Head Dia)*Ø25.4mm(Body Dia)*Ø25.4mm(Tail Dia)*140.5mm(Length)				
Net Weight	120.0g(Excluded battery)				
Additional Functions	Memory function(Lighting modes),Hidden Signal mode				
Package Contents	Flashlight; Stainless steel clip; Lanyard; Holster; O-ring; Manual; Warranty card				
Optional Accessories	<input type="checkbox"/> Battery <input type="checkbox"/> Charger				

Notice: The above-mentioned parameters were lab tested, and are approximate. Parameters may vary between flashlights/chargers, batteries, and environments.